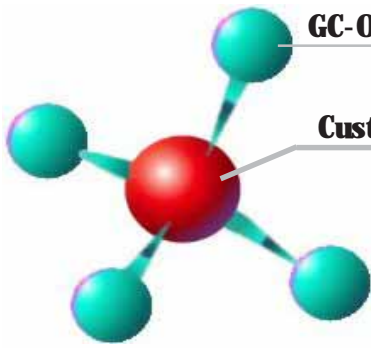


GC-O / GC/MS

Customer support



# Odor Search



- Find odor active peaks from GC/MS
- From GC/MS data to olfactory data
- DSQ II and ITQ

# Odor Search: The bridge from GC/MS to Sniffer



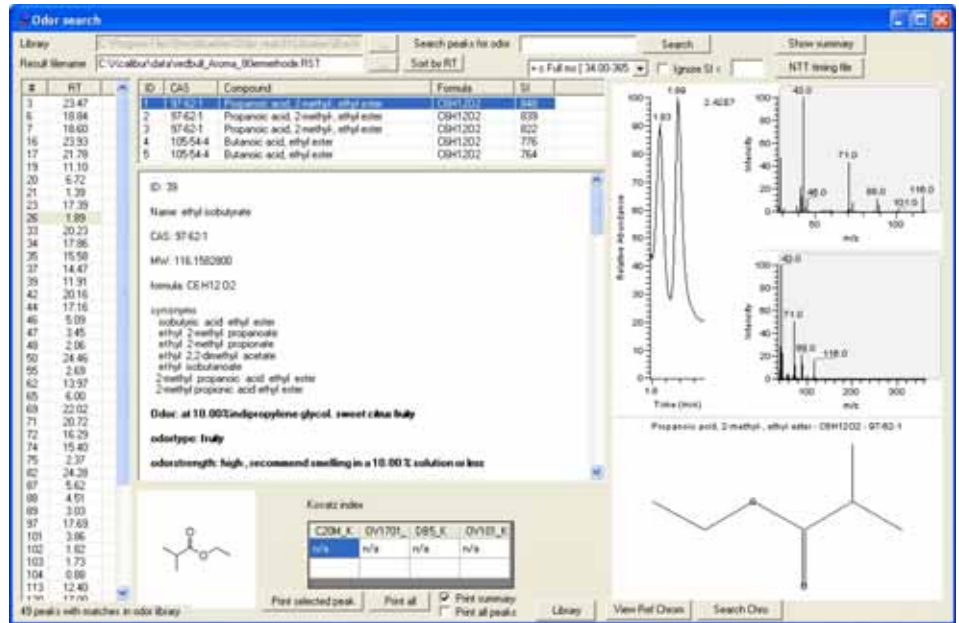
Trace DSQII

## Odor Search



Sniffer 9000 GC-O System

Odor search takes the library search data generated by Xcalibur and compares them to an odor active compound library. The results are plotted for a quick review and odor descriptifs. The GC-O can then be planned by according to the GC/MS data, hence maximizing productivity for your GC-O



Odor search offers the capability of comparing the current analysis with previously stored chromatogram then remove any peaks from the best match. This greatly reduces the number of peaks to be studied



3845 FM1960 RD W # 275 - Houston, TX 77068 - USA  
Tel: +1 281 880-6963 Fax: +1 281 880-9496  
www.brechbuehler.com - info@brechbuehler.com

Steinwiesenstrasse 3, CH-8952 Schlieren, Switzerland  
Tel: +41 44 732 31 31 - Fax: +41 44 730 61 41  
www.brechbuehler.ch - info@brechbuehler.ch  
Brechbühler SA  
Ch. de la Meunière 12, 1008 Prilly, Switzerland  
Tel: +41 21 625 58 10 - Fax: +41 21 625 58 12